



**MENTERI PERTANIAN
REPUBLIK INDONESIA**

**KEPUTUSAN MENTERI PERTANIAN REPUBLIK INDONESIA
NOMOR : 53/Kpts/KB.010/3/2020**

**TENTANG
PELEPASAN VARIETAS KELAPA DALAM GAMBUT
SEBAGAI VARIETAS UNGGUL TANAMAN KELAPA DALAM**

DENGAN RAHMAT TUHAN YANG MAHA ESA

MENTERI PERTANIAN REPUBLIK INDONESIA,

- Menimbang** : a. bahwa dalam rangka pelepasan varietas tanaman telah diterbitkan Peraturan Menteri Pertanian Nomor 38 Tahun 2019 tentang Pelepasan Varietas Tanaman;
- b. bahwa Tim Penilai Varietas Tanaman Perkebunan yang ditetapkan dengan Keputusan Menteri Pertanian Nomor 118/Kpts/KB.020/8/2019 telah melaksanakan sidang pelepasan varietas tanaman perkebunan pada tanggal 16 – 18 Oktober 2019;
- c. bahwa Varietas Kelapa Dalam Gambut mempunyai keunggulan produksi tinggi ($\geq 3,05$ ton kopra/ha/tahun), kadar minyak kopra tinggi (60,48%), dan adaptif pada lahan gambut;
- d. bahwa tanaman kelapa dalam Varietas Kelapa Dalam Gambut yang diusulkan oleh Balai Penelitian Tanaman Palma bekerjasama dengan Pemerintah Provinsi Jambi telah disetujui untuk dilepas;
- e. bahwa berdasarkan pertimbangan sebagaimana dimaksud dalam huruf a, huruf b, huruf c dan huruf d perlu menetapkan Keputusan Menteri Pertanian tentang Pelepasan Varietas Kelapa Dalam Gambut Sebagai Varietas Unggul Tanaman Kelapa Dalam;
- Mengingat** : 1. Undang-Undang Nomor 29 Tahun 2000 tentang Perlindungan Varietas Tanaman (Lembaran Negara Republik Indonesia Tahun 2000 Nomor 241, Tambahan Lembaran Negara Republik Indonesia Nomor 4043);

- KEDUA : Deskripsi, Peta Lokasi, dan Titik Koordinat Lokasi Varietas Kelapa Dalam Gambut sebagaimana dimaksud dalam diktum KESATU tercantum dalam Lampiran yang merupakan bagian tidak terpisahkan dari Keputusan Menteri ini.
- KETIGA : Pengusul berkewajiban membangun kebun sumber benih sumber untuk dijadikan sebagai kebun induk Varietas Kelapa Dalam Gambut dalam rangka memperbanyak dan melestarikan pohon induk terpilih (PIT).
- KEEMPAT : Keputusan Menteri ini mulai berlaku pada tanggal ditetapkan.

Ditetapkan di Jakarta
Pada tanggal, 31 Maret 2020

a.n. MENTERI PERTANIAN
REPUBLIK INDONESIA,
DIREKTUR JENDERAL PERKEBUNAN



KASDI SUBAGYONO

Salinan Keputusan ini disampaikan Kepada Yth. :

1. Menteri Koordinator Bidang Perekonomian;
2. Menteri Dalam Negeri;
3. Menteri Perindustrian;
4. Menteri Perdagangan;
5. Menteri Riset, Teknologi dan Pendidikan Tinggi;
6. Kepala Badan Pengkajian dan Penerapan Teknologi;
7. Kepala Lembaga Ilmu Pengetahuan Indonesia;
8. Direktur Jenderal Pendidikan Tinggi, Kementerian Riset, Teknologi dan Pendidikan Tinggi;
9. Pimpinan Unit Kerja Eselon I di Lingkungan Kementerian Pertanian;
10. Gubernur di Seluruh Indonesia;
11. Bupati Kabupaten Tanjung Jabung Barat, Provinsi Jambi;
12. Kepala Dinas yang membidangi perkebunan di seluruh Indonesia;
13. Kepala Pusat Penelitian dan Pengembangan Perkebunan;
14. Kepala Balai Besar Perbenihan Dan Proteksi Tanaman Perkebunan (BBPPTP) Surabaya;
15. Kepala Balai Besar Perbenihan Dan Proteksi Tanaman Perkebunan (BBPPTP) Medan;
16. Kepala Balai Besar Perbenihan Dan Proteksi Tanaman Perkebunan (BBPPTP) Ambon;
17. Kepala Balai Penelitian Tanaman Palma.

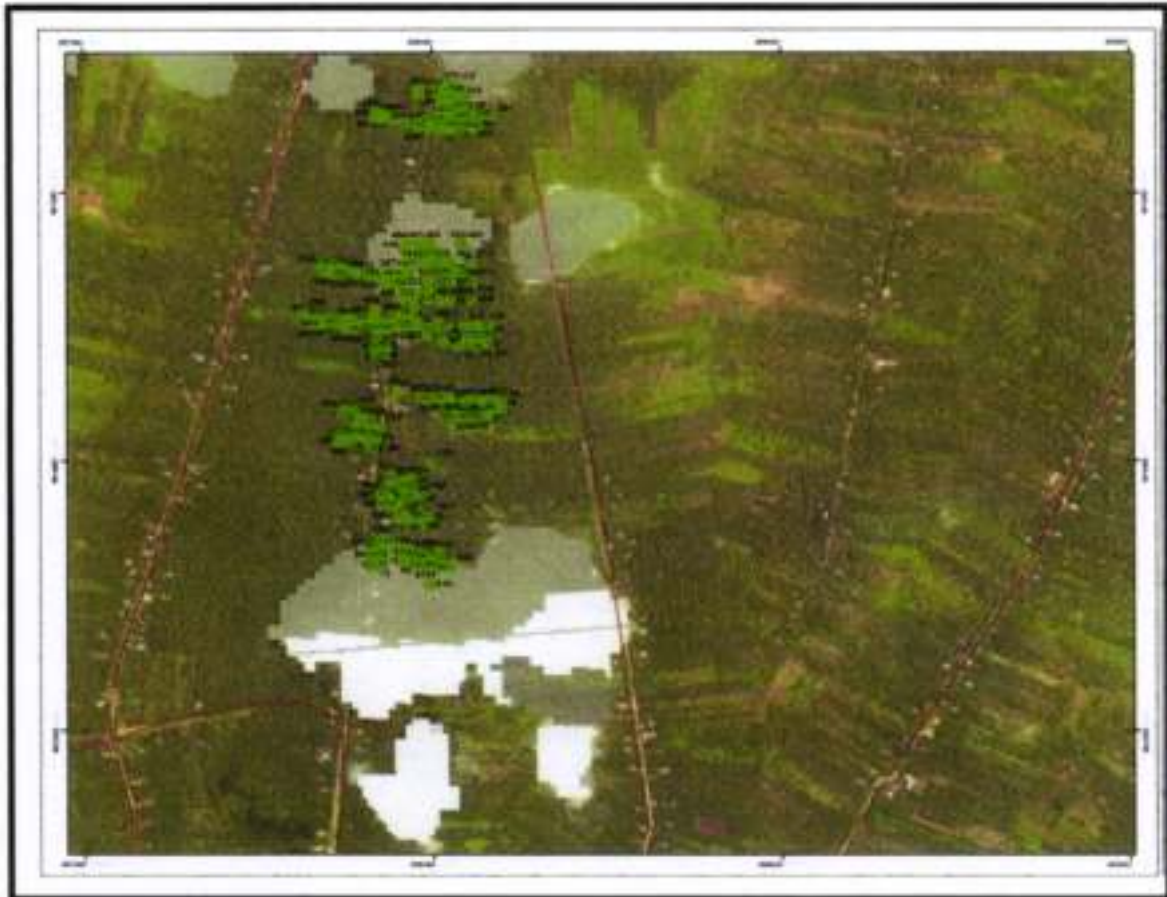
LAMPIRAN
KEPUTUSAN MENTERI PERTANIAN
REPUBLIK INDONESIA
NOMOR 53/Kpts/KB.010/3/2020
TENTANG
PELEPASAN VARIETAS KELAPA DALAM
GAMBUT SEBAGAI VARIETAS UNGGUL
TANAMAN KELAPA DALAM

A. DESKRIPSI VARIETAS KELAPA DALAM GAMBUT

Tanaman	
Asal materi genetik	: Berasal dari desa Mekar Jati Kecamatan Pengabuan Kabupaten Tanjung Jabung Barat, Provinsi Jambi.
Garis keturunan	: Hasil seleksi massa positif dari populasi kelapa dalam lokal setempat asal Desa Mekar Jati.
Tipe varietas	: Populasi bersari bebas.
Tipe tumbuh	: Tegak.
Habitus	: Tunggal.
Lingkungan tumbuh	: Lahan gambut, ketinggian 0 - 50 m dpl, topografi datar.
Bentuk tanaman	: Tanaman tunggal.
Bentuk mahkota daun	: Bulat dan setengah bulat.
Umur mulai berbunga	: 4 tahun (\pm 1).
Umur mulai panen	: 5 tahun (\pm 1).
Batang	
Warna batang	: Coklat keabu-abuan.
Panjang batang bebas daun (m)	: 14,30 \pm 1,03.
Lingkar batang pada tinggi 20 cm (cm)	: 141,70 \pm 17,64.
Lingkar batang pada tinggi 150 cm (cm)	: 92,67 \pm 9,38.
Panjang batang 11 bekas daun (cm)	: 96,17 \pm 22,72.
Jumlah anak daun (satu sisi)	: 113,60 \pm 7,39.
Lebar tangkai daun (cm)	: 7,11 \pm 0,58.
Tebal tangkai daun (cm)	: 2,65 \pm 0,25.
Daun	
Jumlah daun hijau (pelepah)	: 31,10 \pm 3,07.
Panjang daun (cm)	: 578,80 \pm 46,31.
Panjang lamina (cm)	: 415,00 \pm 37,60.
Panjang tangkai daun (cm)	: 139,00 \pm 20,05.
Jumlah anak daun (satu sisi)	: 113,60 \pm 7,39.
Lebar tangkai daun (cm)	: 7,11 \pm 0,58.
Tebal tangkai daun (cm)	: 2,65 \pm 0,25.
Bunga	
Jumlah tandan	: 14,53 \pm 2,92.
Panjang tandan bunga (cm)	: 107,00 \pm 7,07.
Panjang peduncle (cm)	: 34,00 \pm 7,02.
Panjang tangkai tandan (cm)	: 47,00 \pm 7,12.

Lebar tangkai tandan (cm)	: 3,22 ± 0,26.
Tebal tangkai tandan (cm)	: 2,52 ± 0,47.
Jumlah spikelet	: 37,67 ± 5,73.
Jumlah bunga betina	: 23,67 ± 8,73.
Buah	
Warna buah	: Hijau kekuningan, hijau, merah kecoklatan.
Bentuk buah	: Bulat, oval.
Berat buah utuh (g)	: 1.981,67 ± 346,26.
Lingkar buah polar (cm)	: 64,75 ± 3,50.
Lingkar buah equatorial (cm)	: 60,35 ± 3,23.
Berat buah tanpa sabut (g)	: 1.159,67 ± 222,92.
Jumlah buah/tandan (butir)	: 8,81 ± 1,35.
Jumlah buah/pohon/tahun (butir)	: 128 ± 2,42.
Jumlah buah/Ha (butir)	: 16.000.
Sifat Khusus	
Berat kopra/pohon/tahun (kg)	: 30,12.
Kopra minyak (%)	: 60,48.
Estimasi produksi kopra/ha/tahun	: ≥ 3,05.
Estimasi jumlah benih/ha/tahun (butir)	: 49,164.
Ciri karakter spesifik	: Produksi tinggi, kadar minyak tinggi, protein tinggi, dan adaptif pada lahan gambut.
Daerah pengembangan	: Lahan gambut dengan tinggi tempat < 50 m dpl, curah hujan > 1500 - 2000 mm per tahun dengan bulan kering < 5 bulan kering.
Pemulia	: Jeanette Kumaunang, Miftahorrachman, Hengky Novianto, Ismail Maskromo.
Peneliti	: Engelbert Manaroinsong.
Dinas Perkebunan Jambi dan Dinas Perkebunan dan Peternakan Tanjab Barat	: Ita Nelfida, Johan Fatikhin, Tislawati, Nuril Anwar, Aidil, Dislen Hartati, Maulana, Dyah Alfiati, Neli Oktaviani, Masyitah, Titiek Widiarty, Sukarni, Hariman Effendi, M. Arif, Muslim H. Yatiman, Suvani Sugito, Agus Riyanto, Yuda, Sihman, Fikar.
Pemilik Varietas	: Pemerintah Kabupaten Tanjung Jabung Barat.

B. PETA LOKASI MATERI GENETIK VARIETAS KELAPA DALAM GAMBUT KEBUN DI DESA MEKAR JATI, KECAMATAN PENGABUAN, KABUPATEN TANJUNG JABUNG BARAT



C. TITIK KOORDINAT POHON INDUK TERPILIH DI DESA MEKAR JATI, KECAMATAN PENGABUAN, KABUPATEN TANJUNG JABUNG BARAT

No	PIT	Koordinat	Pemilik Kebun
1.	1	S0° 45' 45,57" E 103° 11' 6,56"	Muhyi
2.	2	S0° 45' 45,58" E 103° 11' 6,79"	Muhyi
3.	4	S0° 45' 45,54" E 103° 11' 7,08"	Muhyi
4.	5	S0° 45' 45,63" E 103° 11' 7,35"	Muhyi
5.	6	S0° 45' 46,84" E 103° 11' 8,10"	Muhyi
6.	7	S0° 45' 46,75" E 103° 11' 8,43"	Muhyi
7.	8	S0° 45' 47,89" E 103° 11' 8,49"	Muhyi
8.	9	S0° 45' 47,16" E 103° 11' 8,26"	Muhyi
9.	10	S0° 45' 47,43" E 103° 11' 7,74"	Muhyi
10.	11	S0° 45' 47,17" E 103° 11' 8,02"	Muhyi
11.	12	S0° 45' 47,61" E 103° 11' 6,97"	Muhyi
12.	13	S0° 45' 47,51" E 103° 11' 6,98"	Muhyi
13.	14	S0° 45' 47,38" E 103° 11' 6,73"	Muhyi
14.	15	S0° 45' 47,37" E 103° 11' 6,51"	Muhyi
15.	16	S0° 45' 47,63" E 103° 11' 6,40"	Muhyi
16.	17	S0° 45' 47,72" E 103° 11' 6,24"	Muhyi
17.	18	S0° 45' 46,39" E 103° 11' 6,22"	Muhyi
18.	19	S0° 45' 46,27" E 103° 11' 6,91"	Muhyi
19.	20	S0° 45' 46,02" E 103° 11' 6,60"	Muhyi
20.	21	S0° 45' 45,46" E 103° 11' 6,51"	Muhyi
21.	22	S0° 45' 46,81" E 103° 11' 6,39"	Muhyi
22.	23	S0° 45' 46,98" E 103° 11' 6,34"	Muhyi
23.	24	S0° 45' 49,23" E 103° 11' 5,85"	Yunus
24.	25	S0° 45' 49,46" E 103° 11' 5,96"	Yunus
25.	26	S0° 45' 48,88" E 103° 11' 6,25"	Yunus
26.	27	S0° 45' 48,55" E 103° 11' 6,12"	Yunus
27.	28	S0° 45' 48,40" E 103° 11' 6,32"	Yunus
28.	29	S0° 45' 48,18" E 103° 11' 6,52"	Yunus
29.	30	S0° 45' 48,74" E 103° 11' 6,49"	Yunus
30.	31	S0° 45' 49,49" E 103° 11' 6,19"	Yunus
31.	32	S0° 45' 49,58" E 103° 11' 7,43"	Yunus
32.	33	S0° 45' 49,51" E 103° 11' 7,43"	Yunus
33.	34	S0° 45' 49,50" E 103° 11' 7,11"	Yunus

No	PIT	Koordinat	Pemilik Kebun
34.	35	S0° 45' 49,33" E 103° 11' 8,03"	Yunus
35.	36	S0° 45' 49,51" E 103° 11' 8,60"	Yunus
36.	37	S0° 45' 49,60" E 103° 11' 8,85"	Yunus
37.	38	S0° 45' 49,32" E 103° 11' 8,84"	Yunus
38.	39	S0° 45' 49,92" E 103° 11' 8,06"	Yunus
39.	40	S0° 45' 50,19" E 103° 11' 9,11"	Yunus
40.	41	S0° 45' 50,38" E 103° 11' 9,05"	Yunus
41.	42	S0° 45' 50,26" E 103° 11' 9,75"	Yunus
42.	43	S0° 45' 45,08" E 103° 11' 8,80"	Yunus
43.	44	S0° 45' 50,3" E 103° 11' 8,53"	Yunus
44.	45	S0° 45' 50,01" E 103° 11' 8,47"	Yunus
45.	46	S0° 45' 49,75" E 103° 11' 8,26"	Yunus
46.	47	S0° 45' 49,82" E 103° 11' 8,03"	Yunus
47.	48	S0° 45' 50,07" E 103° 11' 8,99"	Yunus
48.	49	S0° 45' 50,27" E 103° 11' 7,02"	Yunus
49.	50	S0° 45' 49,72" E 103° 11' 8,80"	Yunus
50.	51	S0° 45' 50,01" E 103° 11' 7,47"	Yunus
51.	52	S0° 45' 50,52" E 103° 11' 7,70"	Yunus
52.	53	S0° 45' 50,69" E 103° 11' 7,64"	Yunus
53.	54	S0° 45' 50,72" E 103° 11' 7,44"	Yunus
54.	55	S0° 45' 50,45" E 103° 11' 7,12"	Yunus
55.	56	S0° 45' 50,42" E 103° 11' 7,87"	Yunus
56.	57	S0° 45' 50,49" E 103° 11' 6,58"	Yunus
57.	58	S0° 45' 50,73" E 103° 11' 6,25"	Yunus
58.	59	S0° 45' 50,61" E 103° 11' 6,95"	Yunus
59.	60	S0° 45' 50,71" E 103° 11' 5,77"	Yunus
60.	61	S0° 45' 50,54" E 103° 11' 5,75"	Yunus
61.	62	S0° 45' 50,54" E 103° 11' 5,02"	Yunus
62.	63	S0° 45' 50,17" E 103° 11' 6,89"	Yunus
63.	64	S0° 45' 50,19" E 103° 11' 5,00"	Yunus
64.	65	S0° 45' 50,27" E 103° 11' 6,25"	Yunus
65.	66	S0° 45' 49,72" E 103° 11' 6,83"	Yunus
66.	67	S0° 45' 49,75" E 103° 11' 5,05"	Yunus
67.	68	S0° 45' 49,71" E 103° 11' 6,36"	Yunus
68.	69	S0° 45' 49,74" E 103° 11' 6,45"	Yunus

No	PIT	Koordinat	Pemilik Kebun
69.	70	S0° 45' 49,76" E 103° 11' 6,64"	Yunus
70.	71	S0° 45' 50,00" E 103° 11' 6,70"	Yunus
71.	72	S0° 45' 50,26" E 103° 11' 6,73"	Yunus
72.	73	S0° 45' 50,26" E 103° 11' 6,91"	Yunus
73.	74	S0° 45' 49,95" E 103° 11' 6,90"	Yunus
74.	75	S0° 45' 48,39" E 103° 11' 6,29"	Yunus
75.	76	S0° 45' 48,37" E 103° 11' 7,56"	Yunus
76.	77	S0° 45' 48,39" E 103° 11' 7,79"	Yunus
77.	78	S0° 45' 48,36" E 103° 11' 7,10'	Yunus
78.	79	S0° 45' 48,34" E 103° 11' 8,55"	Yunus
79.	80	S0° 45' 48,56" E 103° 11' 8,84"	Yunus
80.	81	S0° 45' 48,46" E 103° 11' 8,06"	Yunus
81.	82	S0° 45' 48,56" E 103° 11' 9,09"	Yunus
82.	83	S0° 45' 48,88" E 103° 11' 9,56"	Yunus
83.	84	S0° 45' 48,83" E 103° 11' 9,90"	Yunus
84.	85	S0° 45' 48,89" E 103° 11' 9,10"	Yunus
85.	86	S0° 45' 49,10" E 103° 11' 10,96"	Yunus
86.	87	S0° 45' 49,43" E 103° 11' 9,78"	Yunus
87.	88	S0° 45' 49,39" E 103° 11' 9,55"	Yunus
88.	89	S0° 45' 49,26" E 103° 11' 9,52"	Yunus
89.	90	S0° 45' 49,46" E 103° 11' 9,23"	Yunus
90.	91	S0° 45' 49,23" E 103° 11' 9,24"	Yunus
91.	92	S0° 45' 49,14" E 103° 11' 9,24"	Yunus
92.	93	S0° 45' 48,8" E 103° 11' 9,27"	Yunus
93.	94	S0° 45' 48,73" E 103° 11' 9,05"	Yunus
94.	95	S0° 45' 48,76" E 103° 11' 8,80"	Yunus
95.	96	S0° 45' 48,76" E 103° 11' 8,58"	Yunus
96.	97	S0° 45' 48,77" E 103° 11' 8,31"	Yunus
97.	98	S0° 45' 49,20" E 103° 11' 5,18"	Wiji
98.	99	S0° 45' 49,37" E 103° 11' 5,22"	Wiji
99.	100	S0° 45' 49,24" E 103° 11' 4,66"	Wiji
100.	101	S0° 45' 49,83" E 103° 11' 5,14"	Wiji
101.	102	S0° 45' 50,13" E 103° 11' 5,16"	Wiji
102.	103	S0° 45' 49,97" E 103° 11' 4,80"	Wiji
103.	104	S0° 45' 50,21" E 103° 11' 4,51"	Wiji

No	PIT	Koordinat	Pemilik Kebun
104.	105	S0° 45' 50,25" E 103° 11' 4,34"	Wiji
105.	106	S0° 45' 49,87" E 103° 11' 3,96"	Wiji
106.	107	S0° 45' 49,84" E 103° 11' 3,78"	Wiji
107.	108	S0° 45' 49,80" E 103° 11' 3,44"	Wiji
108.	109	S0° 45' 49,77" E 103° 11' 3,24"	Wiji
109.	110	S0° 45' 49,58" E 103° 11' 2,71"	Wiji
110.	111	S0° 45' 49,86" E 103° 11' 2,63"	Wiji
111.	112	S0° 45' 49,59" E 103° 11' 2,26"	Wiji
112.	113	S0° 45' 49,71" E 103° 11' 1,97"	Wiji
113.	114	S0° 45' 49,79" E 103° 11' 1,78"	Wiji
114.	115	S0° 45' 49,55" E 103° 11' 1,50"	Wiji
115.	116	S0° 45' 49,24" E 103° 11' 1,21"	Wiji
116.	117	S0° 45' 49,28" E 103° 11' 0,91"	Wiji
117.	118	S0° 45' 49,41" E 103° 11' 0,61"	Wiji
118.	119	S0° 45' 49,19" E 103° 11' 0,32"	Wiji
119.	120	S0° 45' 49,14" E 103° 11' 0,03"	Wiji
120.	121	S0° 45' 48,78" E 103° 10' 59,52"	Wiji
121.	122	S0° 45' 48,29" E 103° 10' 59,63"	Wiji
122.	123	S0° 45' 48,51" E 103° 10' 59,77"	Wiji
123.	124	S0° 45' 48,41" E 103° 11' 0,10"	Wiji
124.	125	S0° 45' 48,39" E 103° 11' 0,48"	Wiji
125.	126	S0° 45' 48,67" E 103° 11' 0,38"	Wiji
126.	127	S0° 45' 49,00" E 103° 11' 0,34"	Wiji
127.	128	S0° 45' 48,54" E 103° 11' 0,77"	Wiji
128.	129	S0° 45' 48,79" E 103° 11' 0,96"	Wiji
129.	130	S0° 45' 49,02" E 103° 11' 0,89"	Wiji
130.	131	S0° 45' 49,04" E 103° 11' 1,21"	Wiji
131.	132	S0° 45' 48,90" E 103° 11' 1,35"	Wiji
132.	133	S0° 46' 10,62" E 103° 11' 2,28"	Khamdan
133.	134	S0° 46' 11,06" E 103° 11' 2,33"	Khamdan
134.	135	S0° 46' 11,00" E 103° 11' 1,77"	Khamdan
135.	136	S0° 46' 11,12" E 103° 11' 1,82"	Khamdan
136.	137	S0° 46' 11,14" E 103° 11' 1,56"	Khamdan
137.	138	S0° 46' 11,07" E 103° 11' 1,23"	Khamdan
138.	139	S0° 46' 11,50" E 103° 11' 0,94"	Khamdan

No	PIT	Koordinat	Pemilik Kebun
139.	140	S0° 46' 11,48" E 103° 11' 0,09"	Khamdan
140.	141	S0° 46' 10,65" E 103° 10' 59,29"	Khamdan
141.	142	S0° 46' 12,53" E 103° 11' 0,15"	Khamdan
142.	143	S0° 46' 11,51" E 103° 11' 2,02"	Khamdan
143.	144	S0° 46' 11,00" E 103° 11' 2,02"	Khamdan
144.	145	S0° 46' 11,00" E 103° 11' 1,06"	Khamdan
145.	146	S0° 46' 11,00" E 103° 11' 0,09"	Khamdan
146.	147	S0° 46' 11,02" E 103° 11' 0,07"	Khamdan
147.	148	S0° 46' 11,00" E 103° 11' 0,04"	Khamdan
148.	149	S0° 46' 10,09" E 103° 11' 0,00"	Khamdan
149.	150	S0° 46' 11,02" E 103° 10' 59,06"	Khamdan
150.	151	S0° 46' 11,03" E 103° 10' 59,03"	Khamdan
151.	152	S0° 46' 11,02" E 103° 10' 58,02"	Khamdan
152.	153	S0° 46' 11,01" E 103° 10' 58,01"	Khamdan
153.	154	S0° 46' 12,04" E 103° 11' 1,02"	Khamdan
154.	155	S0° 46' 11,03" E 103° 11' 2,08"	Khamdan
155.	156	S0° 46' 11,06" E 103° 11' 2,03"	Khamdan
156.	157	S0° 46' 6,01" E 103° 11' 3,04"	Romlan
157.	158	S0° 46' 6,00" E 103° 11' 3,04"	Romlan
158.	159	S0° 46' 3,07" E 103° 11' 3,06"	Romlan
159.	160	S0° 46' 5,02" E 103° 11' 3,09"	Romlan
160.	161	S0° 46' 5,05" E 103° 11' 4,00"	Romlan
161.	162	S0° 46' 5,01" E 103° 11' 5,06"	Romlan
162.	163	S0° 46' 5,00" E 103° 11' 5,05"	Romlan
163.	164	S0° 46' 7,08" E 103° 11' 6,00"	Romlan
164.	165	S0° 46' 7,08" E 103° 11' 6,01"	Romlan
165.	166	S0° 46' 7,07" E 103° 11' 6,01"	Romlan
166.	167	S0° 46' 7,09" E 103° 11' 6,02"	Romlan
167.	168	S0° 46' 7,03" E 103° 11' 6,01"	Romlan
168.	169	S0° 46' 6,01" E 103° 11' 7,03"	Romlan
169.	170	S0° 46' 6,09" E 103° 11' 7,08"	Romlan
170.	171	S0° 46' 6,01" E 103° 11' 7,09"	Romlan
171.	172	S0° 46' 6,09" E 103° 11' 7,04"	Romlan
172.	173	S0° 46' 9,04" E 103° 11' 6,09"	Romlan
173.	174	S0° 46' 9,00" E 103° 11' 9,02"	Romlan

No	PIT	Koordinat	Pemilik Kebun
174.	175	S0° 46' 9,02" E 103° 11' 9,01"	Romlan
175.	176	S0° 46' 9,01" E 103° 11' 9,00"	Romlan
176.	177	S0° 46' 9,05" E 103° 11' 7,09"	Romlan
177.	178	S0° 46' 5,08" E 103° 11' 7,03"	Romlan
178.	179	S0° 46' 5,03" E 103° 11' 7,01"	Romlan
179.	180	S0° 46' 5,04" E 103° 11' 5,09"	Romlan
180.	181	S0° 46' 5,01" E 103° 11' 5,07"	Romlan
181.	182	S0° 46' 6,09" E 103° 11' 8,07"	Romlan
182.	183	S0° 46' 6,07" E 103° 11' 5,07"	Romlan
183.	184	S0° 46' 6,05" E 103° 11' 3,09"	Romlan
184.	185	S0° 46' 6,03" E 103° 11' 3,03"	Romlan
185.	186	S0° 46' 6,01" E 103° 11' 3,01"	Romlan
186.	187	S0° 46' 3,00" E 103° 11' 5,04"	Romlan
187.	188	S0° 46' 6,01" E 103° 11' 3,01"	Romlan
188.	189	S0° 46' 3,01" E 103° 11' 8,09"	Romlan
189.	190	S0° 46' 3,02" E 103° 11' 8,09"	Romlan
190.	191	S0° 46' 3,05" E 103° 11' 8,04"	Romlan
191.	192	S0° 46' 3,03" E 103° 11' 4,09"	Romlan
192.	193	S0° 46' 5,01" E 103° 11' 4,05"	Romlan
193.	194	S0° 46' 5,09" E 103° 11' 4,04"	Romlan
194.	195	S0° 46' 5,06" E 103° 11' 4,08"	Romlan
195.	196	S0° 46' 5,09" E 103° 11' 4,02"	Romlan
196.	197	S0° 46' 5,09" E 103° 11' 4,03"	Romlan
197.	198	S0° 46' 5,08" E 103° 11' 6,02"	Romlan
198.	199	S0° 46' 9,05" E 103° 11' 6,01"	Romlan
199.	200	S0° 46' 9,07" E 103° 11' 6,08"	Romlan
200.	201	S0° 46' 9,09" E 103° 11' 5,09"	Romlan
201.	202	S0° 46' 9,04" E 103° 11' 5,07"	Romlan
202.	203	S0° 46' 9,05" E 103° 11' 5,02"	Romlan
203.	204	S0° 46' 9,09" E 103° 11' 7,02"	Romlan
204.	205	S0° 46' 9,08" E 103° 11' 7,04"	Romlan
205.	206	S0° 46' 9,08" E 103° 11' 7,03"	Romlan
206.	207	S0° 46' 7,07" E 103° 11' 7,07"	Romlan
207.	208	S0° 46' 7,09" E 103° 11' 7,09"	Romlan
208.	209	S0° 46' 7,05" E 103° 11' 9,08"	Romlan

No	PIT	Koordinat	Pemilik Kebun
209.	210	S0° 46' 7,06" E 103° 11' 9,09"	Romlan
210.	211	S0° 46' 7,05" E 103° 11' 9,07"	Romlan
211.	212	S0° 46' 7,05" E 103° 11' 9,05"	Romlan
212.	213	S0° 46' 7,03" E 103° 11' 9,07"	Romlan
213.	210	S0° 46' 5,08" E 103° 11' 9,05"	Romlan
214.	211	S0° 46' 5,06" E 103° 11' 6,08"	Romlan
215.	215	S0° 46' 5,07" E 103° 11' 6,09"	Romlan
216.	216	S0° 46' 5,09" E 103° 11' 6,03"	Romlan
217.	217	S0° 46' 5,03" E 103° 11' 6,08"	Romlan
218.	218	S0° 46' 4,08" E 103° 11' 6,04"	Romlan
219.	219	S0° 46' 4,02" E 103° 11' 5,00"	Romlan
220.	220	S0° 46' 4,01" E 103° 11' 5,04"	Romlan
221.	221	S0° 46' 8,07" E 103° 11' 5,02"	Romlan
222.	222	S0° 46' 8,06" E 103° 11' 5,01"	Romlan
223.	223	S0° 46' 8,06" E 103° 11' 5,06"	Romlan
224.	224	S0° 46' 5,09" E 103° 11' 5,03"	Romlan
225.	225	S0° 46' 7,07" E 103° 11' 5,02"	Romlan
226.	226	S0° 46' 7,03" E 103° 11' 5,01"	Romlan
227.	227	S0° 46' 5,02" E 103° 11' 5,03"	Romlan
228.	228	S0° 46' 5,03" E 103° 11' 5,00"	Romlan
229.	229	S0° 46' 14,03" E 103° 11' 1,08"	Sutaji
230.	230	S0° 46' 14,09" E 103° 11' 1,08"	Sutaji
231.	231	S0° 46' 15,01" E 103° 11' 1,07"	Sutaji
232.	232	S0° 46' 15,01" E 103° 11' 1,00"	Sutaji
233.	233	S0° 46' 15,00" E 103° 11' 0,07"	Sutaji
234.	234	S0° 46' 14,09" E 103° 11' 0,05"	Sutaji
235.	235	S0° 46' 14,06" E 103° 11' 0,02"	Sutaji
236.	236	S0° 46' 14,09" E 103° 10' 59,04"	Sutaji
237.	237	S0° 46' 14,09" E 103° 11' 0,01"	Sutaji
238.	238	S0° 46' 13,09" E 103° 11' 0,04"	Sutaji
239.	239	S0° 46' 13,08" E 103° 11' 0,06"	Sutaji
240.	240	S0° 46' 13,03" E 103° 11' 0,08"	Sutaji
241.	241	S0° 46' 13,04" E 103° 10' 59,08"	Sutaji
242.	242	S0° 46' 13,07" E 103° 10' 59,01"	Sutaji
243.	243	S0° 46' 13,08" E 103° 10' 59,00"	Sutaji

No	PIT	Koordinat	Pemilik Kebun
244.	244	S0° 46' 13,06" E 103° 10' 58,06"	Sutaji
245.	245	S0° 46' 13,04" E 103° 10' 58,08"	Sutaji
246.	246	S0° 46' 13,04" E 103° 10' 59,00"	Sutaji
247.	247	S0° 46' 13,01" E 103° 10' 58,09"	Sutaji
248.	248	S0° 46' 12,09" E 103° 10' 59,09"	Sutaji
249.	249	S0° 46' 13,09" E 103° 10' 59,04"	Sutaji
250.	250	S0° 46' 14,01" E 103° 10' 58,08"	Sutaji
251.	251	S0° 46' 14,02" E 103° 10' 58,05"	Sutaji
252.	252	S0° 46' 13,07" E 103° 10' 57,05"	Sutaji
253.	253	S0° 46' 13,02" E 103° 10' 57,08"	Sutaji
254.	254	S0° 46' 13,03" E 103° 10' 57,07"	Sutaji
255.	255	S0° 46' 13,02" E 103° 10' 57,09"	Sutaji
256.	256	S0° 46' 7,10" E 103° 11' 2,08"	Supriyadi
257.	257	S0° 46' 7,51" E 103° 11' 2,66"	Supriyadi
258.	258	S0° 46' 6,59" E 103° 11' 2,63"	Supriyadi
259.	259	S0° 46' 6,45" E 103° 11' 2,39"	Supriyadi
260.	260	S0° 46' 6,59" E 103° 11' 1,88"	Supriyadi
261.	261	S0° 46' 6,73" E 103° 11' 1,68"	Supriyadi
262.	262	S0° 46' 7,14" E 103° 11' 1,74"	Supriyadi
263.	263	S0° 46' 7,10" E 103° 11' 1,65"	Supriyadi
264.	264	S0° 46' 6,53" E 103° 11' 1,60"	Supriyadi
265.	265	S0° 46' 6,84" E 103° 11' 1,31"	Supriyadi
266.	266	S0° 46' 7,23" E 103° 11' 1,22"	Supriyadi
267.	267	S0° 46' 7,26" E 103° 11' 0,92"	Supriyadi
268.	268	S0° 46' 6,44" E 103° 11' 1,05"	Supriyadi
269.	269	S0° 46' 5,99" E 103° 10' 59,81"	Supriyadi
270.	270	S0° 46' 6,27" E 103° 10' 59,49"	Supriyadi
271.	271	S0° 46' 6,29" E 103° 10' 58,32"	Supriyadi
272.	272	S0° 46' 6,12" E 103° 10' 58,00"	Supriyadi
273.	273	S0° 46' 6,01" E 103° 10' 57,65"	Supriyadi
274.	274	S0° 46' 5,99" E 103° 10' 57,47"	Supriyadi
275.	275	S0° 46' 5,58" E 103° 10' 56,95"	Supriyadi
276.	276	S0° 46' 5,05" E 103° 10' 56,37"	Supriyadi
277.	277	S0° 46' 5,09" E 103° 10' 55,05"	Supriyadi
278.	278	S0° 46' 5,28" E 103° 10' 54,99"	Supriyadi

No	PIT	Koordinat	Pemilik Kebun
279.	279	S0° 46' 5,59" E 103° 10' 54,68"	Supriyadi
280.	280	S0° 46' 5,75" E 103° 10' 54,57"	Supriyadi
281.	281	S0° 46' 5,65" E 103° 10' 54,92"	Supriyadi
282.	282	S0° 46' 5,67" E 103° 10' 55,25"	Supriyadi
283.	283	S0° 46' 6,01" E 103° 10' 55,43"	Supriyadi
284.	284	S0° 46' 5,73" E 103° 10' 55,50"	Supriyadi
285.	285	S0° 46' 5,51" E 103° 10' 55,59"	Supriyadi
286.	286	S0° 46' 5,60" E 103° 10' 55,90"	Supriyadi
287.	287	S0° 46' 5,97" E 103° 10' 56,15"	Supriyadi
288.	288	S0° 46' 6,21" E 103° 10' 56,03"	Supriyadi
289.	289	S0° 46' 6,26" E 103° 10' 56,29"	Supriyadi
290.	290	S0° 46' 5,99" E 103° 10' 56,42"	Supriyadi
291.	291	S0° 46' 6,02" E 103° 10' 57,06"	Supriyadi
292.	292	S0° 46' 5,88" E 103° 10' 57,97"	Supriyadi
293.	293	S0° 46' 5,98" E 103° 10' 58,34"	Supriyadi
294.	294	S0° 46' 6,05" E 103° 10' 58,56"	Supriyadi
295.	295	S0° 46' 6,15" E 103° 10' 58,81"	Supriyadi
296.	296	S0° 46' 6,37" E 103° 10' 59,94"	Supriyadi
297.	297	S0° 46' 6,25" E 103° 11' 1,08"	Supriyadi
298.	298	S0° 46' 6,08" E 103° 11' 1,44"	Supriyadi
299.	299	S0° 46' 11,81" E 103° 11' 1,45"	Syamsuddin
300.	300	S0° 46' 12,50" E 103° 11' 1,17"	Syamsuddin
301.	301	S0° 46' 12,65" E 103° 11' 0,24"	Syamsuddin
302.	302	S0° 46' 11,90" E 103° 11' 0,06"	Syamsuddin
303.	303	S0° 46' 11,51" E 103° 11' 0,06"	Syamsuddin
304.	304	S0° 46' 11,42" E 103° 10' 59,44"	Syamsuddin
305.	305	S0° 46' 11,60" E 103° 10' 59,25"	Syamsuddin
306.	306	S0° 46' 11,65" E 103° 10' 59,22"	Syamsuddin
307.	307	S0° 46' 11,62" E 103° 10' 58,44"	Syamsuddin
308.	308	S0° 46' 11,59" E 103° 10' 57,97"	Syamsuddin
309.	309	S0° 46' 11,48" E 103° 10' 57,67"	Syamsuddin
310.	310	S0° 46' 11,42" E 103° 10' 57,17"	Syamsuddin
311.	311	S0° 46' 11,31" E 103° 10' 56,91"	Syamsuddin
312.	312	S0° 46' 11,10" E 103° 10' 56,89"	Syamsuddin
313.	313	S0° 46' 11,04" E 103° 10' 56,90"	Syamsuddin

No	PIT	Koordinat	Pemilik Kebun
314.	314	S0° 46' 11,13" E 103° 10' 56,09"	Syamsuddin
315.	315	S0° 46' 11,07" E 103° 10' 55,81"	Syamsuddin
316.	316	S0° 46' 10,97" E 103° 10' 55,30"	Syamsuddin
317.	317	S0° 46' 10,97" E 103° 10' 55,02"	Syamsuddin
318.	318	S0° 46' 10,66" E 103° 10' 55,87"	Syamsuddin
319.	319	S0° 46' 10,82" E 103° 10' 54,80"	Syamsuddin
320.	320	S0° 46' 10,35" E 103° 10' 53,35"	Syamsuddin
321.	321	S0° 46' 10,93" E 103° 10' 53,96"	Syamsuddin
322.	322	S0° 46' 10,97" E 103° 10' 54,25"	Syamsuddin
323.	323	S0° 46' 11,40" E 103° 10' 54,44"	Syamsuddin
324.	324	S0° 46' 11,67" E 103° 10' 54,44"	Syamsuddin
325.	325	S0° 46' 11,76" E 103° 10' 55,17"	Syamsuddin
326.	326	S0° 46' 11,25" E 103° 10' 55,16"	Syamsuddin
327.	327	S0° 46' 11,24" E 103° 10' 55,48"	Syamsuddin
328.	328	S0° 46' 11,45" E 103° 10' 55,97"	Syamsuddin
329.	329	S0° 46' 11,49" E 103° 10' 55,46"	Syamsuddin
330.	330	S0° 46' 11,59" E 103° 10' 56,79"	Syamsuddin
331.	331	S0° 46' 12,15" E 103° 10' 57,44"	Syamsuddin
332.	332	S0° 46' 12,14" E 103° 10' 57,73"	Syamsuddin
333.	333	S0° 46' 12,18" E 103° 10' 58,25"	Syamsuddin
334.	334	S0° 46' 11,09" E 103° 10' 57,70"	Syamsuddin
335.	335	S0° 46' 11,33" E 103° 10' 57,73"	Syamsuddin
336.	336	S0° 46' 12,00" E 103° 11' 2,15"	Syamsuddin
337.	337	S0° 46' 12,00" E 103° 11' 2,18"	Syamsuddin
338.	338	S0° 46' 12,00" E 103° 11' 2,20"	Syamsuddin
339.	339	S0° 46' 11,90" E 103° 11' 10,20"	Wiji
340.	340	S0° 46' 11,90" E 103° 11' 9,60"	Wiji
341.	341	S0° 46' 12,40" E 103° 11' 9,50"	Wiji
342.	342	S0° 46' 11,80" E 103° 11' 9,10"	Wiji
343.	343	S0° 46' 12,00" E 103° 11' 8,30"	Wiji
344.	344	S0° 46' 11,80" E 103° 11' 7,90"	Wiji
345.	345	S0° 46' 11,80" E 103° 11' 6,70"	Wiji
346.	346	S0° 46' 12,00" E 103° 11' 5,90"	Wiji
347.	347	S0° 46' 11,60" E 103° 11' 6,00"	Wiji
348.	348	S0° 46' 11,50" E 103° 11' 5,60"	Wiji

No	PIT	Koordinat	Pemilik Kebun
349.	349	S0° 46' 11,30" E 103° 11' 3,80"	Wiji
350.	350	S0° 46' 11,40" E 103° 11' 3,60"	Wiji
351.	351	S0° 46' 11,60" E 103° 11' 3,70"	Wiji
352.	352	S0° 46' 12,30" E 103° 11' 4,70"	H. Pandi
353.	353	S0° 46' 13,00" E 103° 11' 4,90"	H. Pandi
354.	354	S0° 46' 13,60" E 103° 11' 6,30"	H. Pandi
355.	355	S0° 46' 14,10" E 103° 11' 7,70"	H. Pandi
356.	356	S0° 46' 13,90" E 103° 11' 8,60"	H. Pandi
357.	357	S0° 46' 13,50" E 103° 11' 8,50"	H. Pandi
358.	358	S0° 46' 13,70" E 103° 11' 9,20"	H. Pandi
359.	359	S0° 46' 14,10" E 103° 11' 9,40"	H. Pandi
360.	360	S0° 46' 13,90" E 103° 11' 10,30"	H. Pandi
361.	361	S0° 46' 13,80" E 103° 11' 10,60"	H. Pandi
362.	362	S0° 46' 13,30" E 103° 11' 10,10"	H. Pandi
363.	363	S0° 46' 13,20" E 103° 11' 10,40"	H. Pandi
364.	364	S0° 46' 18,90" E 103° 11' 2,10"	Miseri
365.	365	S0° 46' 19,20" E 103° 11' 2,10"	Miseri
366.	366	S0° 46' 19,60" E 103° 11' 4,30"	Miseri
367.	367	S0° 46' 20,00" E 103° 11' 4,80"	Miseri
368.	368	S0° 46' 19,80" E 103° 11' 4,80"	Miseri
369.	369	S0° 46' 19,80" E 103° 11' 5,00"	Miseri
370.	370	S0° 46' 19,80" E 103° 11' 5,70"	Miseri
371.	371	S0° 46' 19,70" E 103° 11' 5,70"	Miseri
372.	372	S0° 46' 20,00" E 103° 11' 6,00"	Miseri
373.	373	S0° 46' 19,90" E 103° 11' 6,10"	Miseri
374.	374	S0° 46' 19,70" E 103° 11' 6,30"	Miseri
375.	375	S0° 46' 19,70" E 103° 11' 6,80"	Miseri
376.	376	S0° 46' 19,80" E 103° 11' 6,80"	Miseri
377.	377	S0° 46' 19,80" E 103° 11' 7,00"	Miseri
378.	378	S0° 46' 19,70" E 103° 11' 6,90"	Miseri
379.	379	S0° 46' 20,10" E 103° 11' 8,40"	Miseri
380.	380	S0° 46' 20,30" E 103° 11' 8,40"	Miseri
381.	381	S0° 46' 19,90" E 103° 11' 9,20"	Miseri
382.	382	S0° 46' 20,00" E 103° 11' 9,90"	Miseri
383.	383	S0° 46' 20,20" E 103° 11' 10,20"	Miseri

No	PIT	Koordinat	Pemilik Kebun
384.	384	S0° 46' 20,00" E 103° 11' 10,50"	Miseri
385.	385	S0° 46' 20,10" E 103° 11' 11,30"	Miseri
386.	386	S0° 46' 20,10" E 103° 11' 11,60"	Miseri
387.	387	S0° 46' 20,30" E 103° 11' 11,90"	Miseri
388.	388	S0° 46' 21,40" E 103° 11' 10,60"	Yanto
389.	389	S0° 46' 21,70" E 103° 11' 10,50"	Yanto
390.	390	S0° 46' 21,80" E 103° 11' 9,60"	Yanto
391.	391	S0° 46' 21,90" E 103° 11' 9,30"	Yanto
392.	392	S0° 46' 22,00" E 103° 11' 9,00"	Yanto
393.	393	S0° 46' 22,00" E 103° 11' 8,80"	Yanto
394.	394	S0° 46' 21,80" E 103° 11' 8,80"	Yanto
395.	395	S0° 46' 21,90" E 103° 11' 8,60"	Yanto
396.	396	S0° 46' 21,90" E 103° 11' 8,40"	Yanto
397.	397	S0° 46' 21,80" E 103° 11' 8,10"	Yanto
398.	398	S0° 46' 21,80" E 103° 11' 7,90"	Yanto
399.	399	S0° 46' 21,80" E 103° 11' 7,30"	Yanto
400.	400	S0° 46' 21,60" E 103° 11' 7,30"	Yanto
401.	401	S0° 46' 21,80" E 103° 11' 7,00"	Yanto
402.	402	S0° 46' 37,85" E 103° 10' 59,44"	Budiman
403.	403	S0° 46' 37,02" E 103° 10' 59,76"	Budiman
404.	404	S0° 46' 36,89" E 103° 10' 59,85"	Budiman
405.	405	S0° 46' 36,85" E 103° 11' 0,16"	Budiman
406.	406	S0° 46' 36,96" E 103° 11' 0,29"	Budiman
407.	407	S0° 46' 37,19" E 103° 11' 0,24"	Budiman
408.	408	S0° 46' 37,48" E 103° 11' 0,20"	Budiman
409.	409	S0° 46' 37,73" E 103° 11' 0,17"	Budiman
410.	410	S0° 46' 37,95" E 103° 10' 59,78"	Budiman
411.	411	S0° 46' 37,84" E 103° 10' 59,53"	Budiman
412.	412	S0° 46' 37,88" E 103° 10' 59,85"	Budiman
413.	413	S0° 46' 37,78" E 103° 11' 0,45"	Budiman
414.	414	S0° 46' 37,23" E 103° 11' 2,24"	Budiman
415.	415	S0° 46' 37,16" E 103° 11' 2,27"	Budiman
416.	416	S0° 46' 37,16" E 103° 11' 2,40"	Budiman
417.	417	S0° 46' 37,08" E 103° 11' 2,70"	Budiman
418.	418	S0° 46' 36,88" E 103° 11' 3,84"	Budiman

No	PIT	Koordinat	Pemilik Kebun
419.	419	S0° 46' 36,72" E 103° 11' 3,41"	Budiman
420.	420	S0° 46' 37,35" E 103° 11' 2,88"	Budiman
421.	421	S0° 46' 37,55" E 103° 11' 2,60"	Budiman
422.	422	S0° 46' 37,06" E 103° 11' 4,15"	Budiman
423.	423	S0° 46' 37,36" E 103° 11' 4,02"	Budiman
424.	424	S0° 46' 37,58" E 103° 11' 3,95"	Budiman
425.	425	S0° 46' 37,68" E 103° 11' 3,92"	Budiman
426.	426	S0° 46' 37,79" E 103° 11' 3,99"	Budiman
427.	427	S0° 46' 37,74" E 103° 11' 4,23"	Budiman
428.	428	S0° 46' 37,70" E 103° 11' 4,23"	Budiman
429.	429	S0° 46' 37,88" E 103° 11' 4,45"	Budiman
430.	430	S0° 46' 37,57" E 103° 11' 4,69"	Budiman
431.	431	S0° 46' 37,91" E 103° 11' 4,91"	Budiman
432.	432	S0° 46' 37,95" E 103° 11' 4,92"	Budiman
433.	433	S0° 46' 37,97" E 103° 11' 4,93"	Budiman
434.	434	S0° 46' 37,86" E 103° 11' 4,72"	Budiman
435.	435	S0° 46' 37,88" E 103° 11' 5,03"	Budiman
436.	436	S0° 46' 38,26" E 103° 11' 5,11"	Budiman
437.	437	S0° 46' 38,15" E 103° 11' 5,26"	Budiman
438.	438	S0° 46' 36,91" E 103° 11' 4,16"	Budiman
439.	439	S0° 46' 36,66" E 103° 11' 4,14"	Budiman
440.	440	S0° 46' 38,29" E 103° 11' 5,32"	Budiman
441.	441	S0° 46' 38,01" E 103° 11' 5,45"	Budiman
442.	442	S0° 46' 38,04" E 103° 11' 5,60"	Budiman
443.	443	S0° 46' 38,11" E 103° 11' 6,92"	Budiman
444.	444	S0° 46' 38,00" E 103° 11' 5,20"	Budiman
445.	445	S0° 46' 37,68" E 103° 11' 5,97"	Budiman
446.	446	S0° 46' 37,50" E 103° 11' 5,56"	Budiman
447.	447	S0° 46' 37,30" E 103° 11' 5,33"	Budiman
448.	448	S0° 46' 37,09" E 103° 11' 5,41"	Budiman
449.	449	S0° 46' 37,01" E 103° 11' 5,64"	Budiman
450.	450	S0° 46' 36,97" E 103° 11' 6,14"	Budiman
451.	451	S0° 46' 36,75" E 103° 11' 6,02"	Budiman
452.	452	S0° 46' 36,53" E 103° 11' 5,94"	Budiman
453.	453	S0° 46' 36,56" E 103° 11' 5,64"	Budiman

No	PIT	Koordinat	Pemilik Kebun
454.	454	S0° 46' 36,73" E 103° 11' 5,60"	Budiman
455.	455	S0° 46' 36,78" E 103° 11' 5,28"	Budiman
456.	456	S0° 46' 36,76" E 103° 11' 5,14"	Budiman
457.	457	S0° 46' 36,74" E 103° 11' 4,79"	Budiman
458.	458	S0° 46' 36,37" E 103° 11' 2,85"	Budiman
459.	459	S0° 46' 36,74" E 103° 11' 2,44"	Budiman
460.	460	S0° 46' 36,34" E 103° 11' 2,49"	Budiman
461.	461	S0° 46' 36,22" E 103° 11' 2,27"	Budiman
462.	462	S0° 46' 36,03" E 103° 11' 2,17"	Budiman
463.	463	S0° 46' 35,83" E 103° 11' 2,14"	Budiman
464.	464	S0° 46' 36,08" E 103° 11' 2,45"	Budiman
465.	465	S0° 46' 36,09" E 103° 11' 1,85"	Budiman
466.	466	S0° 46' 35,87" E 103° 11' 1,70"	Budiman
467.	467	S0° 46' 35,79" E 103° 11' 1,53"	Budiman
468.	468	S0° 46' 35,82" E 103° 11' 1,34"	Budiman
469.	469	S0° 46' 35,90" E 103° 11' 1,10"	Budiman
470.	470	S0° 46' 35,71" E 103° 11' 0,86"	Budiman
471.	471	S0° 46' 35,89" E 103° 11' 0,50"	Budiman
472.	472	S0° 46' 35,09" E 103° 11' 0,46"	Budiman
473.	473	S0° 46' 35,91" E 103° 11' 0,19"	Budiman
474.	474	S0° 46' 35,72" E 103° 11' 0,23"	Budiman
475.	475	S0° 46' 35,76" E 103° 11' 0,03"	Budiman
476.	476	S0° 46' 36,09" E 103° 10' 59,60"	Budiman
477.	477	S0° 46' 36,40" E 103° 10' 59,65"	Budiman
478.	478	S0° 46' 36,58" E 103° 10' 59,51"	Budiman
479.	479	S0° 46' 36,44" E 103° 11' 3,14"	Budiman
480.	480	S0° 46' 36,67" E 103° 11' 3,81"	Budiman
481.	481	S0° 46' 36,87" E 103° 11' 4,44"	Budiman
482.	482	S0° 46' 35,84" E 103° 10' 59,75"	Budiman

a.n. MENTERI PERTANIAN
REPUBLIK INDONESIA,
DIREKTUR JENDERAL PERKEEBUNAN



KASDI SUBAGYONO